

CV 22 AF - AIRFLOW



STEELWORKS AND FOUNDRIES



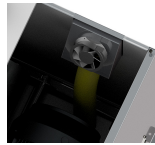
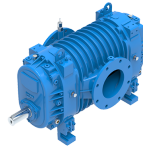
CEMENT



POWER PLANTS



HEAVY INDUSTRY



- ✓ Sturdy vacuum cleaner for intensive use
- ✓ Powerful lobe pump with electric motor
- ✓ High performances and long-lasting equipment
- ✓ Low noise level
- ✓ Complete steel construction
- ✓ Easy and safe to maintain



SUCTION UNIT

Voltage	V - Hz	400 - 50 3~
Power	kW	22
Electrical protection	IP	55
Max water lift	mmH ₂ O	5.000
Max air flow	m ³ /h	1.300
Suction inlet	mm	140
Safety filter		70.000 - M
Cooling filter	cm ² - Classe	70.000 - M



VOLUME

Dimensions	cm	114x124x147h
Weight	kg	590



SUCTION UNIT

The suction unit is provided with a volumetric vacuum pump with tri-lobe rotors which can reach very high airflow and waterlift levels

A safety filter guarantees the maximum protection for both motor and pump

A soundproof painted steel cabin with cooling fan protects the pump from external agents

The unit must be coupled with a filter hopper



OPTIONALS

- ✓ POWER CABLE AND PLUG
- ✓ CONTROL PANEL WITH PLC FOR MANAGEMENT OF EXTERNAL DEVICES (FILTER CLEANING CONTROL, PROBES, VALVES, ETC)