

DBFV 10 Z22 - SUCTION UNIT



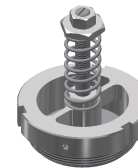
FOOD INDUSTRY



CEMENT



COFFEE, TEA, TOBACCO PROCESSING



- ✓ Side channel blower motor, powerful and silent, totally maintenance free, suitable for continuous duty
- ✓ Pressure relief valve for motor protection
- ✓ Low noise level
- ✓ Reduced downtime of machine tools
- ✓ Possibility of integration on other vacuum cleaners

- ✓ Modularity is guaranteed to fulfil the client's needs
- ✓ Full customization for specific needs
- ✓ Long lasting
- ✓ ATEX-certified Z22



SUCTION UNIT

Power	kW	0,85 - 0,75
Electrical protection	IP	65
Max water lift	mmH ₂ O	2.000
Max air flow	m ³ /h	150
Suction inlet	mm	50
Noise level (EN ISO 3744)	dB(A)	69
Marking	Ex II3D Ex IIIC T125°C DC	
Atex zones	3D (20 int/22 ext)	



FILTER UNIT

Filter Type	Bag
-------------	-----



COLLECTION UNIT

Transport capacity	kg/h	15
--------------------	------	----



VOLUME

Dimensions	cm	50x33x73h
Weight	kg	35



SUCTION UNIT

The suction unit is a side channel blower, with direct coupling between the motor and the impeller fan. It designed without any transmission system, and is therefore silent, totally maintenance free and suitable for continuous duty operations.

A pressure relief valve protects the motor, providing additional air for cooling.



FILTER UNIT

The polyester bag filter, placed inside the filtering chamber, guarantees a wide filtering surface and high resistance to dust passage and clogging.



COLLECTION UNIT

The unit is manufactured with thick painted steel for improved sturdiness and long-lasting lifetime



OPTIONALS

- ✓ STAINLESS STEEL COLLECTION TANK
- ✓ TOTAL STAINLESS STEEL CONSTRUCTION
- ✓ EARTH GROUNDING