

DBFV 20 Z22 - SUCTION UNIT



FOOD INDUSTRY



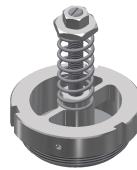
OEM ORIGINAL EQUIPMENT MANUFACTURERS



CHEMICAL-PHARMACEUTICAL



COFFEE, TEA, TOBACCO PROCESSING



- ✓ Side channel blower motor , powerful and silent, totally maintenance free, suitable for continuous duty
- ✓ Integrated filter cleaning system
- ✓ Complete steel construction
- ✓ Pressure relief valve for motor protection
- ✓ Low noise level
- ✓ Easy filter replacement
- ✓ Possibility of integration on other vacuum cleaners
- ✓ Modularity is guaranteed to fulfil the client's needs
- ✓ Full customization for specific needs
- ✓ ATEX-certified Z22



SUCTION UNIT

Power	kW	2,2 - 4,6
Electrical protection	IP	65
Max water lift	mmH ₂ O	3.000
Max air flow	m ³ /h	270
Suction inlet	mm	50
Noise level (EN ISO 3744)	dB(A)	69
Marking	II 3D Ex h tc IIIC T80°C (Int)/ T165°C (Ext) Dc	
Atex zones	3D (20 int/22 ext)	



FILTER UNIT

Filter Type	Star
Cleaning system	Manual



COLLECTION UNIT

Transport capacity	kg/h	25
--------------------	------	----



VOLUME

Dimensions	cm	54x55x103h
Weight	kg	45



SUCTION UNIT

The suction unit is a side channel blower, with direct coupling between the motor and the impeller fan. It is designed without any transmission system, and is therefore silent, totally maintenance free and suitable for continuous duty operations.

A pressure relief valve protects the motor, providing additional air for cooling.



FILTER UNIT

It is possible to clean the filter using an integrated mechanical system: an external lever shakes the filter vertically and enables to clean the filter thoroughly and safely, maintaining constant suction performance and preventing any dispersion of dust in the environment.

The large surface star antistatic filter, located inside the filter chamber, is made of polyester and provides high resistance against clogging and passage of fine dust.



COLLECTION UNIT

The unit is manufactured with thick painted steel for improved sturdiness and long-lasting lifetime



OPTIONALS

- ✓ EARTH GROUNDING
- ✓ STAINLESS STEEL COLLECTION TANK
- ✓ TOTAL STAINLESS STEEL CONSTRUCTION