



DHV 30 AF HOPPER - AIRFLOW



STEELWORKS AND FOUNDRIES



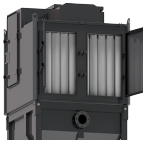
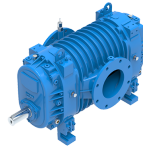
CEMENT



POWER PLANTS



HEAVY INDUSTRY



- ✓ Sturdy vacuum cleaner for intensive use
- ✓ Powerful lobe pump with electric motor
- ✓ High performances and long-lasting equipment
- ✓ High efficiency filtration
- ✓ Great autonomy of the system
- ✓ Integrated automatic filter cleaning system
- ✓ Discharge system by means of a valve
- ✓ Unit for localized discharge
- ✓ Low noise level



SUCTION UNIT

| | | |
|-----------------------|--------------------|-------------|
| Voltage | V - Hz | 400 - 50 3~ |
| Power | kW | 30 |
| Electrical protection | IP | 55 |
| Max water lift | mmH ₂ O | 5.000 |
| Max air flow | m ³ /h | 1.700 |
| Suction inlet | mm | 140 |



FILTER UNIT

| | | |
|-----------------------|---------------------|------------------------|
| Filter Type | | 30 Sleeves |
| Surface - Diameter | cm ² -mm | 160.000 - 120 |
| Material - Efficiency | IEC 60335-2-69 | Ant Polyester - M PTFE |
| Cleaning system | | Automatic |
| Secondary filter | | Cartridge |
| Surface | cm ² | 70.000 |



COLLECTION UNIT

| | | |
|----------|---|-------|
| Capacity | l | 1.000 |
|----------|---|-------|



VOLUME

| | | |
|------------|----|--------------|
| Dimensions | cm | 168x160x356h |
| Weight | kg | 2.080 |



SUCTION UNIT

The suction unit is provided with a volumetric vacuum pump with tri-lobe rotors which can reach very high airflow and waterlift levels

A safety filter guarantees the maximum protection for both motor and pump

The electrical panel is suitable for remote control and a push-button is installed on the chassis as standard



FILTER UNIT

2 sets of filtering sleeves work continuously and alternatively. Doing so, they guarantee the maximum filtration efficiency and protection for the motor

The filter is cleaned by an automatic system with backwash of the chambers. Compressed air is provided by an onboard compressor.



COLLECTION UNIT

The unit is manufactured with thick painted steel for improved sturdiness and long-lasting lifetime

Integrated butterfly valve for discharge

The material is safely and quickly discharged by means of a lever

On request, other automatic discharge systems are available



OPTIONALS

✓ POWER CABLE AND PLUG