

DHV 30 HV HOPPER - HIGH VACUUM



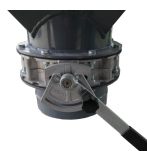
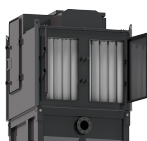
STEELWORKS AND FOUNDRIES



CEMENT



POWER PLANTS



- ✓ Unit for localized discharge
- ✓ Integrated automatic filter cleaning system
- ✓ Sturdy vacuum cleaner for intensive use
- ✓ Powerful lobe pump with electric motor
- ✓ High performances and long-lasting equipment
- ✓ High efficiency filtration
- ✓ Discharge system by means of a valve
- ✓ Low noise level
- ✓ Great autonomy of the system



SUCTION UNIT

Voltage	V - Hz	400 - 50 3~
Power	kW	30
Electrical protection	IP	55
Max water lift	mmH ₂ O	7.500
Max air flow	m ³ /h	1.300
Suction inlet	mm	140



FILTER UNIT

Filter Type	30 Sleeves	
Surface - Diameter	cm ² -mm	160.000 - 120
Material - Efficiency	IEC 60335-2-69	Ant Polyester - M PTFE
Cleaning system	Automatic	
Secondary filter	Cartridge	
Surface	cm ²	70.000



COLLECTION UNIT

Capacity	l	1.000
----------	---	-------



VOLUME

Dimensions	cm	168x160x356h
Weight	kg	2.100



SUCTION UNIT

The suction unit is provided with a volumetric vacuum pump with tri-lobe rotors and lateral injection cooling system. This pump can reach very high airflow and waterlift levels
A safety filter guarantees the maximum protection for both motor and pump
The electrical panel is suitable for remote control and a push-button is installed on the chassis as standard



FILTER UNIT

2 sets of filtering sleeves work continuously and alternatively. Doing so, they guarantee the maximum filtration efficiency and protection for the motor
The filter is cleaned by an automatic system with backwash of the chambers. Compressed air is provided by an onboard compressor.



COLLECTION UNIT

Integrated butterfly valve for discharge
The material is safely and quickly discharged by means of a lever
The unit is manufactured with thick painted steel for improved sturdiness and long-lasting lifetime



OPTIONALS

✓ POWER CABLE AND PLUG