

DHV 30 HV TANK - HIGH VACUUM



STEELWORKS AND FOUNDRIES



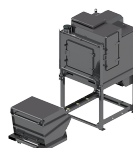
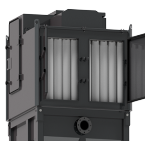
CEMENT



POWER PLANTS



HEAVY INDUSTRY



- ✓ Sturdy vacuum cleaner for intensive use
- ✓ Powerful lobe pump with electric motor
- ✓ High performances and long-lasting equipment
- ✓ High efficiency filtration
- ✓ Semi-automatic filter cleaning system
- ✓ Easy to handle
- ✓ Detachable container with fork lift intakes which make it is easy to handle
- ✓ Discharge system by means of a valve
- ✓ Low noise level
- ✓ Great autonomy of the system



SUCTION UNIT

Voltage	V - Hz	400 - 50 3~
Power	kW	30
Electrical protection	IP	55
Max water lift	mmH ₂ O	7.500
Max air flow	m ³ /h	1.300
Suction inlet	mm	140



FILTER UNIT

Filter Type	30 Sleeves	
Surface - Diameter	cm ² -mm	160.000 - 120
Material - Efficiency	IEC 60335-2-69	Ant Polyester - M PTFE
Cleaning system	Automatic	
Secondary filter	Cartridge	
Surface	cm ²	70.000



COLLECTION UNIT

Capacity	l	800
----------	---	-----



VOLUME

Dimensions	cm	168x160x291h
Weight	kg	2.340



SUCTION UNIT

The suction unit is provided with a volumetric vacuum pump with tri-lobe rotors which can reach very high airflow and waterlift levels

A safety filter guarantees the maximum protection for both motor and pump

The electrical panel is suitable for remote control and a push-button is installed on the chassis as standard



FILTER UNIT

2 sets of filtering sleeves work continuously and alternatively. Doing so, they guarantee the maximum filtration efficiency and protection for the motor

The filter is cleaned by an automatic system with backwash of the chambers. Compressed air is provided by an onboard compressor.



COLLECTION UNIT

Forklift intakes for easy discharge.

The material is collected into a capacious and detachable container, which is easy to handle thanks to fork lift intakes

The material is safely and quickly discharged by means of a lever

The unit is manufactured with thick painted steel for improved sturdiness and long-lasting lifetime



OPTIONALS

✓ POWER CABLE AND PLUG